

Schedule 5: Phase 4 work

Livingstone Online

Version History

Version	Description	Author	Date
1.0	Initial Draft	Nigel Banks	March 6th, 2017
1.1	Revised with feedback from Adrian	Nigel Banks	March 8th, 2017
1.2	Revised to include more information about 'Upload Support'.	Nigel Banks	March 8th, 2017

[Version History](#)

[RDF Generation](#)

[Geolocation Page](#)

[Upload Support](#)

[Spectral Image GIF Display](#)

[Ingest No Stitch Spectral Images](#)

[Miscellaneous Improvements](#)

[Cost Summary](#)

RDF Generation

On the [previous site](#) RDF was generated for [submission](#) into the NINES site. The accepted RDF items can be viewed [here](#). To generate this RDF we'll be drawing from multiple sources.

- Manuscript MODS
- Manuscript TEI
- Drupal Pages
- Hard-coded values

The generated RDF will comply with the NINES [guidelines and standards](#).

To achieve this a batch process will be implemented that will utilize:

- Solr for fetching each manuscripts MODS / TEI to form a single page.
 - Will only included normal manuscripts and spectral manuscripts.
 - URL's will point to the item in *Browse by Standard Catalogue*.
- Drupal Select query to fetch all the 'Section Pages'.
- Hard-coded values will be either written in code and applied to ever generated RDF-document.

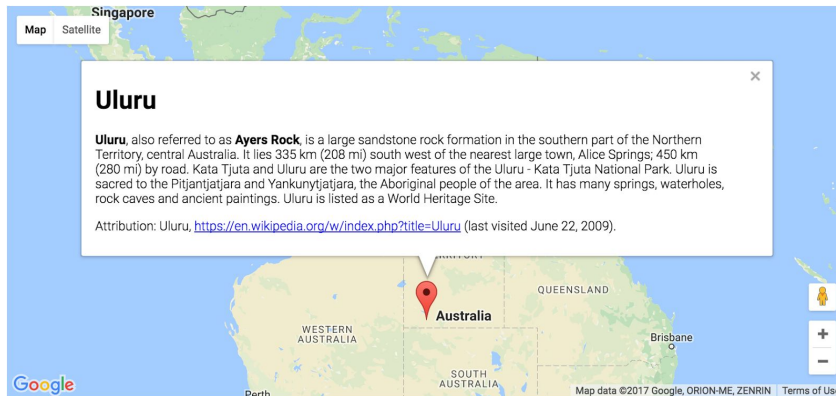
A single RDF document will be generated for each manuscript and each 'Section Page'. RDF will be generated for 'private manuscripts. All 'Section pages' will be exported, there won't be an ability to limit which get exported, though after the fact you can choose which RDF documents you pass onto NINES.

Estimate: 8 hrs

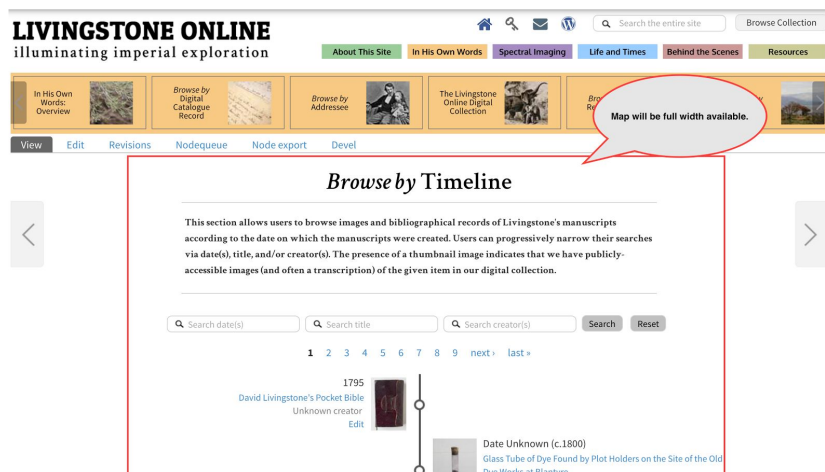
Geolocation Page

A number of various tools were evaluated by Liza Coburn in a [Google document](#). Though the best course of action will be to just use the Google Map API directly rather than the third party tools.

We'll use the MODS long/latitude to generate the view. (With title date, etc).



The map will take the full width of space available on the site the section shown in red:

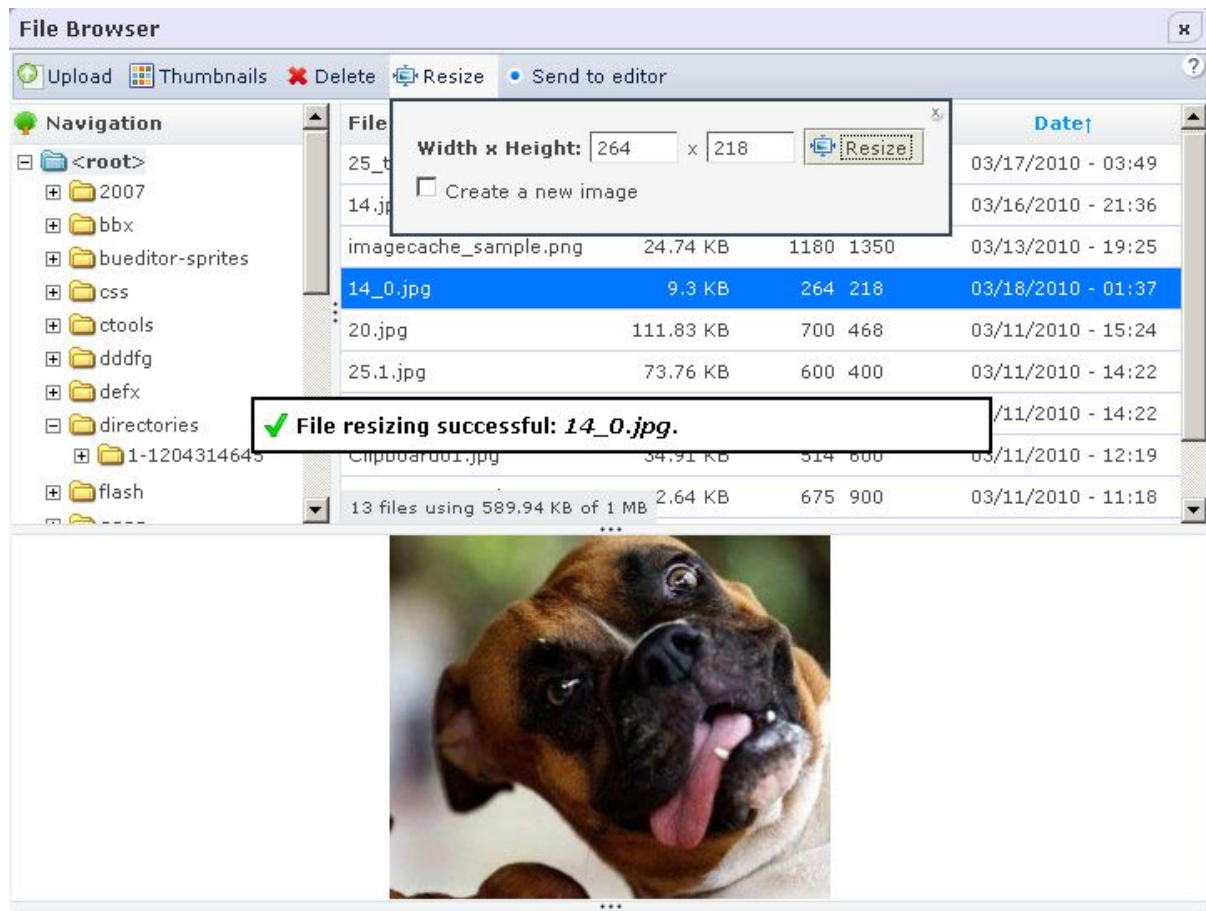


It will also incorporate: a full screen button which allow the user to toggle full screen display of the map.

Estimate: 8 hours

Upload Support

I think the module [IMCE](#), [imce_tools](#), [imce_mkdir](#), and [imce_wysiwyg](#) will fit the bill, it allows the browsing and uploading of file via directories.



Change the upload of the site such that it's easier to find images and content and upload it and associate it with various pages.

In addition to this:

- A bash script will be provided, such that files can be uploaded in bulk to the server.
- A Spread sheet will be provided that includes the columns (Title, Link, Old File Path).
- Adrian will add a 'New File Path' column in the spreadsheet and populate it.
- An additional script will be written to convert all the 'Old File Path' to the 'New File Path', as well as delete the old files and move them to their new locations.
 - Note that it's possible for one to many mappings from old files paths to new file paths, so deletes will only be performed after the all of the copies have occurred.

Estimate: 3.5 hours

Spectral Image GIF Display

After investigating this it's not really a feasible thing to do, I calculated the sizes of the GIF files and they range from 20MB to 120MB with 100MB being the average. They just load way too slow, and it's really user unfriendly to have the client wait for the 100MB of image to download for display even with fast connections, it would be completely unfeasible for mobile connections.

Instead we will provide download links alongside the archival packets:

Retrospect to be Inserted in the Journal, 10 March 1870

The large number of spectral images available for this item necessitates that we offer archival packets of the item page by page. Select any of the archival packets below to download all available spectral images for the given page plus supporting documentation.

<i>Archival Packets</i>	<i>GIF Images</i>
liv_000211_0001 (42.8 MB)	liv_000211_0001 (122.8 MB)
liv_000211_0002 (43.0 MB)	liv_000211_0002 (100.2 MB)
liv_000211_0003 (40.9 MB)	liv_000211_0003 (111.9 MB)
liv_000211_0004 (44.3 MB)	liv_000211_0004 (130.0 MB)

Estimate: 1.5 hrs

Ingest No Stitch Spectral Images

There are a number of no stitch spectral images located here on the FTP server:

/Livingstone-Directors/1870-Archival-Materials-withMetadata+ZIPs/noStitch-images

Since there is only a handful of no stitch manuscripts, we'll just manually ingest them all as it will be much faster, than adding them to the FTP sync script.

- The no stitch spectral manuscripts objects will have the same structure as the regular spectral images.
- These no-stitch spectral images won't be displayed in the 'Digital Catalogue' or displayed in search results.

Estimate: 2 hours

Miscellaneous Improvements

Issue	Estimate (hrs)
Catalogue: width of access column	0.5 hr
Issues with viewers (just the scroll issue left)	4 hr
Theming issue on Firefox in Ubuntu	1 hr
Add another table to the fedora import page to list the number of pages, etc that are missing derivatives	2 hr
Change the Import All button to no longer run the Solr Manuscript re-index (using differential re-index)	2 hr
When adding new manuscripts Solr Index appears to need to be run twice (this might be quite hard to debug)	4 - ?hr
Capture low level errors during ftp import and display them on the error log tab	3 hr
Coding manual: iFrame	1 hr
Long paths in top-menu (change to core to support long urls)	2 hr
Timeline images: clickable	1 hr
Order of icons	0.5 hr
Share icons: changes	1.5 hr
Critical edition dropdown: Title (might require a re-architecture)	?
Drupal tooltips: Mobile (small issue left)	0.5 hr
Dropdown: Widget (definitely re-architecture)	?
Server: Setting Backup Location	0.25 hr
Multi-Viewer & Spectral Image Viewer: Mobile (no issue listed)	N/A
Add documentation for how to build Critical editions in drupal	2 hr
Tooltips	1 hr
Timeline Image Size (had issues before not sure how long)	2 hr- ?
Browse by Catalogue: Notes for IFrame (unknown)	N / A
Add alt-text and title where possible (really only for content images)	N / A
Continuation of the Theme rewrite	5 hrs
Total	~ 30 hrs